

DRY WEIGHT: 960kg

TYPICAL EXAMPLE ONLY, RATING AND OPTIONS ATTACHED
MAY CHANGE OVERALL DIMENSIONS.

D.WOOD		00	M.BLEAKLEY	09.11.23		E44
CHECKED BY	DATE	ISSUE	DESIGNER	DATE	JOB NO	ENGINE



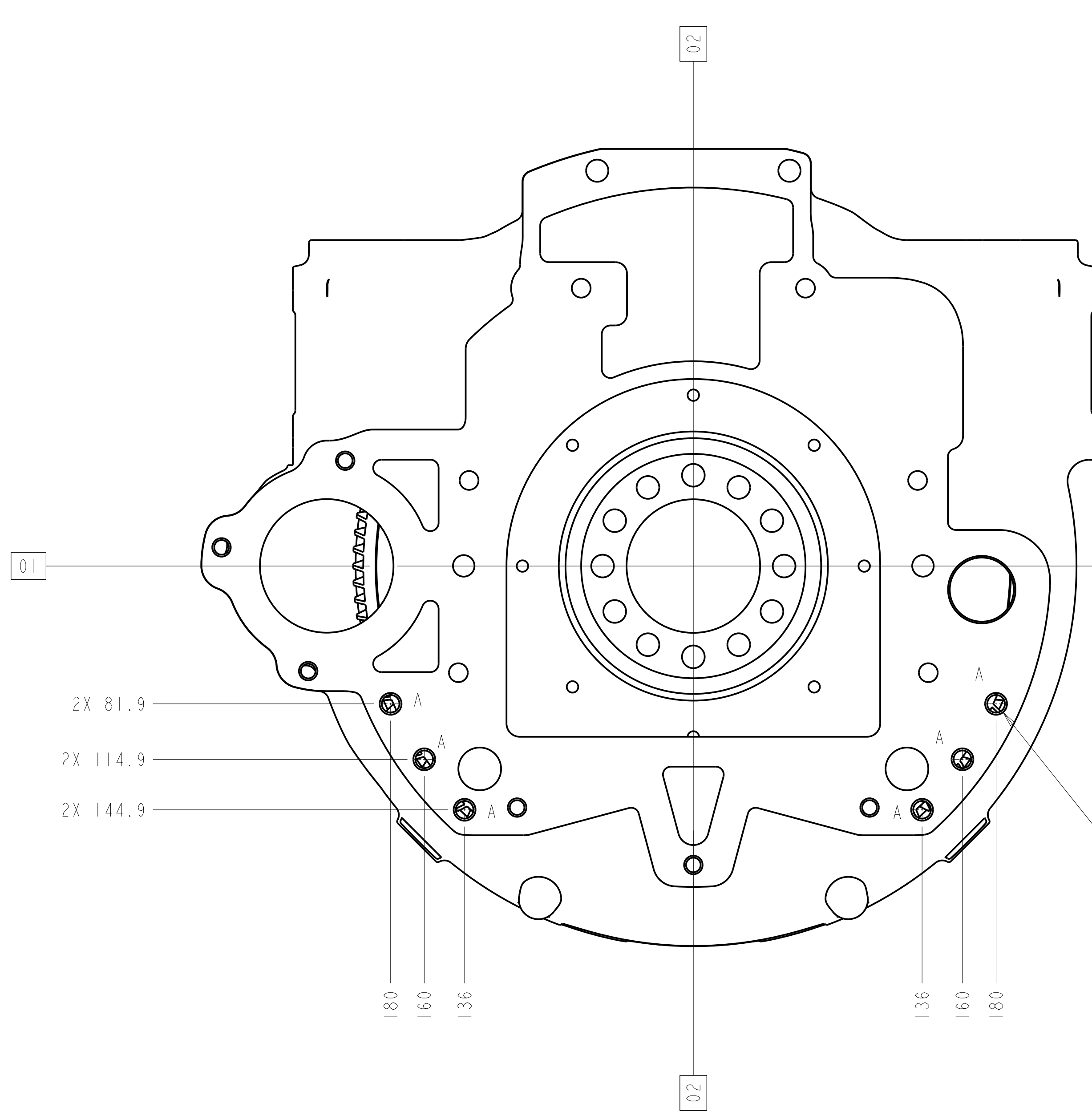
ALL RIGHTS RESERVED
THIS DOCUMENT CONTAINS CONFIDENTIAL INFORMATION
WHICH MUST NOT BE COPIED WHOLLY OR IN PART, NOR
DISCLOSED TO ANY PERSON WITHOUT OUR PRIOR
AUTHORITY IN WRITING.
© PERKINS ENGINES COMPANY LIMITED

AO THIRD ANGLE Pro/ENGINEER

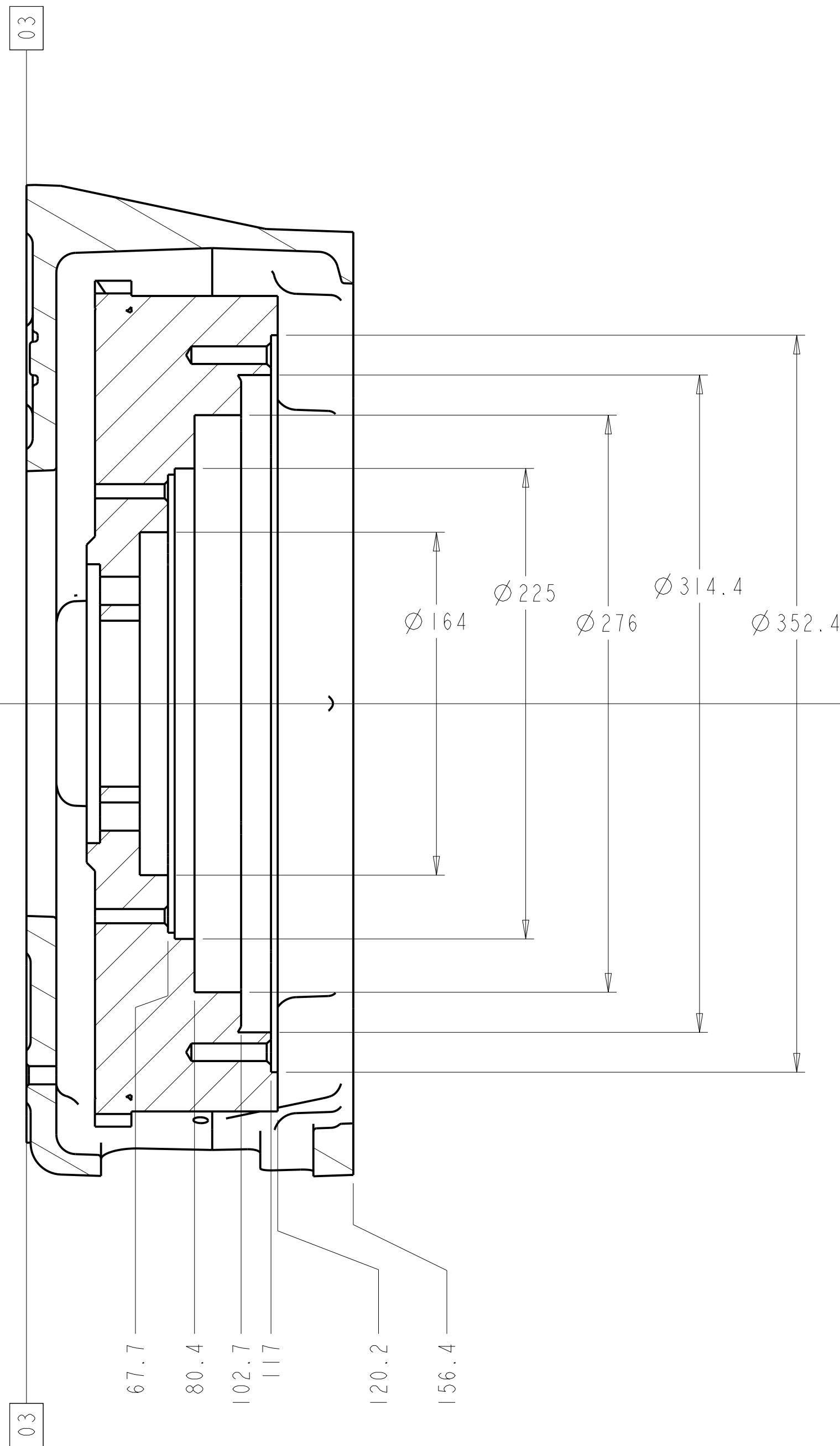
INSTALLATION-ENG
E44 RAD TA

SCHEME No 6486237

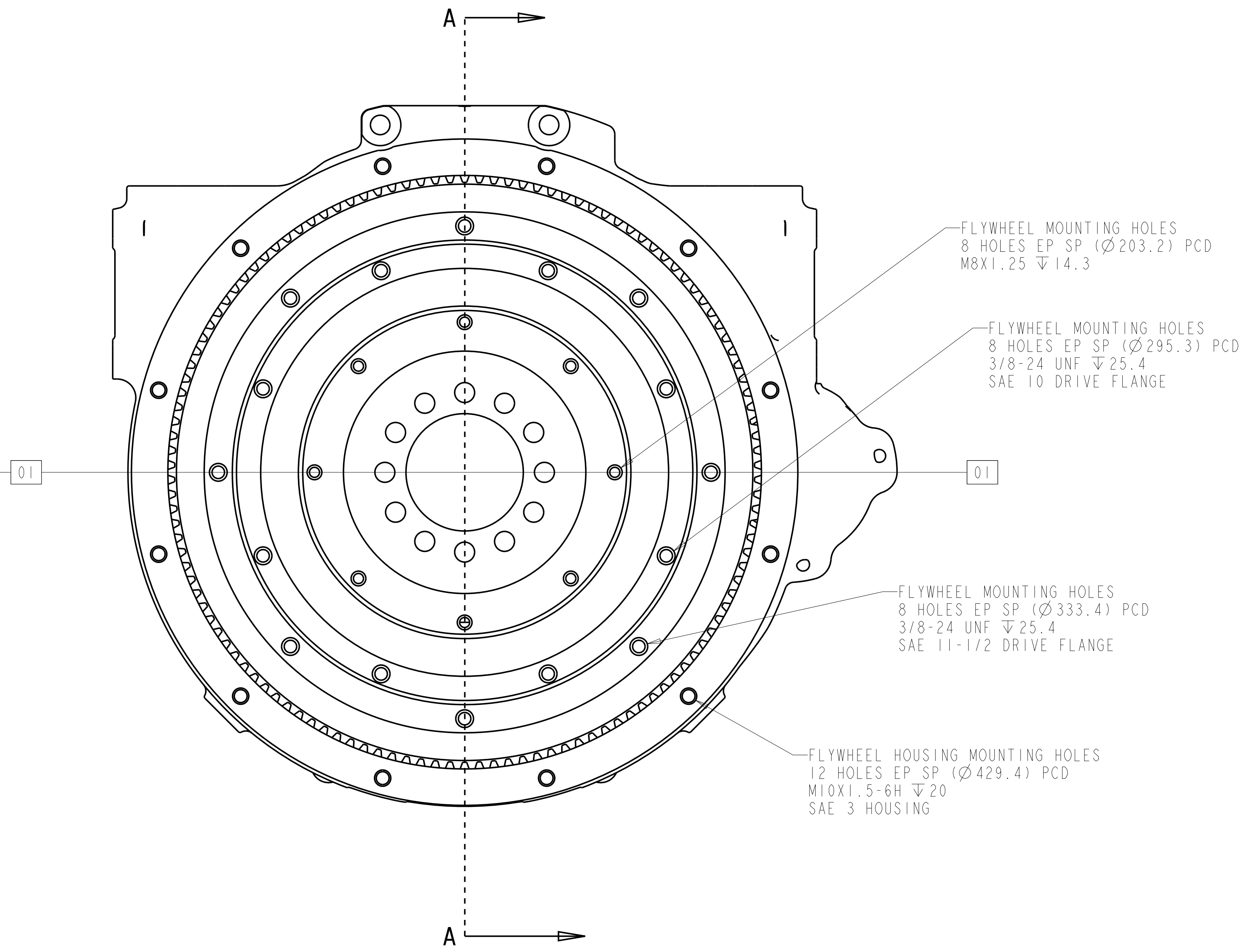
Scale : 1:10 Sheet : 1 of 2



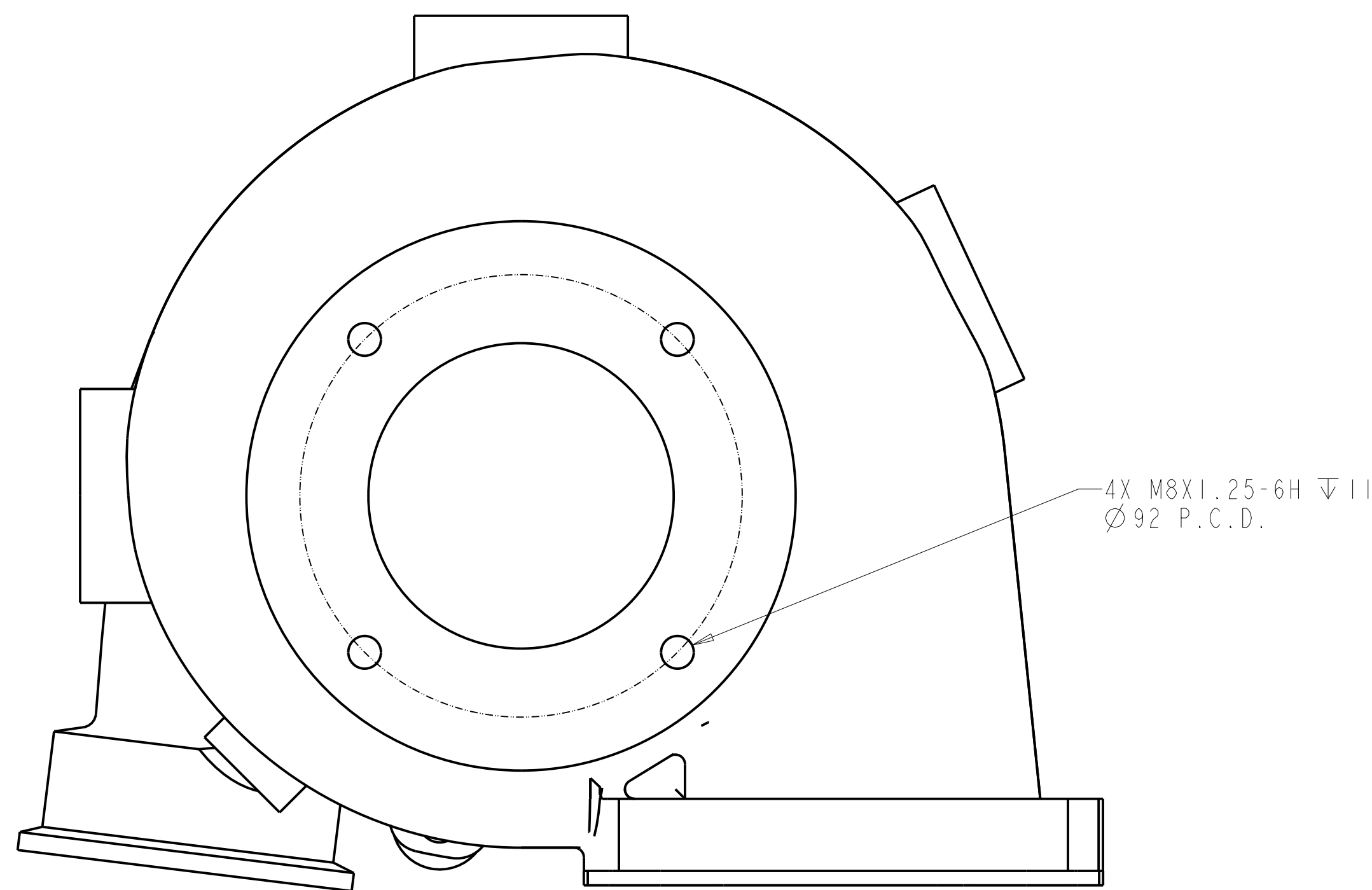
FRONT VIEW



SECTION A-A
LEFT SIDE VIEW
FLYWHEEL & HOUSING VIEW



REAR VIEW



EXHAUST OUTLET VIEW

FOR NOTES SEE SHEET 1

D.WOOD		00	M.BLEAKLEY	09.11.23		E44
CHECKED BY	DATE	ISSUE	DESIGNER	DATE	JOB NO	ENGINE

Perkins Perkins Engines Company Limited		INSTALLATION-ENG E44 RAD TA	
ALL RIGHTS RESERVED THIS DOCUMENT CONTAINS CONFIDENTIAL INFORMATION WHICH MUST NOT BE COPIED WHOLLY OR IN PART, NOR DISCLOSED TO ANY PERSON WITHOUT OUR PRIOR AUTHORITY IN WRITING. © PERKINS ENGINES COMPANY LIMITED		SCHEME No	6486237
AO	THIRD ANGLE	Pro/ENGINEER	Scale : 1:2 Sheet : 2 of 2